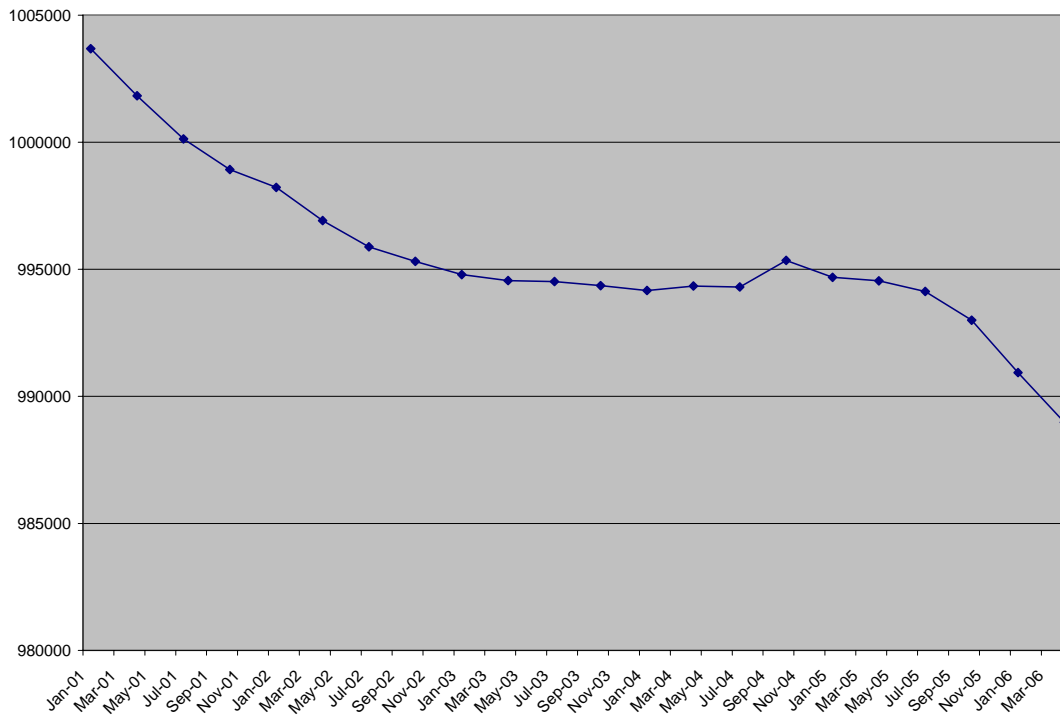


Population Graph



Sask Population: January 01- April 06. Statistics Canada

Population Chart

Canada's population¹

	January	April	January	April	January to March	
	1, 2005 ^{PR}	1, 2005 ^{PR}	1, 2006 ^{PP}	1, 2006 ^{PP}	% change	
					2005	2006
Canada	32,107,043	32,173,890	32,422,919	32,501,147	0.21	0.24
Newfoundland and Labrador	517,339	516,374	514,409	512,509	-0.19	-0.37
Prince Edward Island	137,771	137,826	138,157	138,307	0.04	0.11
Nova Scotia	938,339	937,800	936,988	935,824	-0.06	-0.12
New Brunswick	752,266	752,345	751,111	750,504	0.01	-0.08
Quebec	7,573,726	7,582,541	7,623,870	7,636,710	0.12	0.17
Ontario	12,462,445	12,494,228	12,599,364	12,630,547	0.26	0.25
Manitoba	1,174,959	1,176,402	1,178,348	1,179,681	0.12	0.11
Saskatchewan	994,687	994,551	990,930	988,980	-0.01	-0.20
Alberta	3,226,301	3,239,739	3,306,359	3,332,225	0.42	0.78
British Columbia	4,225,623	4,238,359	4,279,462	4,292,166	0.30	0.30
Yukon	30,862	30,881	31,150	31,069	0.06	-0.26
Northwest Territories	43,015	43,042	42,526	42,179	0.06	-0.82
Nunavut	29,710	29,802	30,245	30,446	0.31	0.66

PR Updated postcensal estimates.

PP Preliminary postcensal estimates.

1. These estimates are based on the 2001 census counts adjusted for net undercoverage.